

# PE-DESIGN

PERSONAL EMBROIDERY DESIGN  
SOFTWARE SYSTEM

For all Brother Home Embroidery Machines

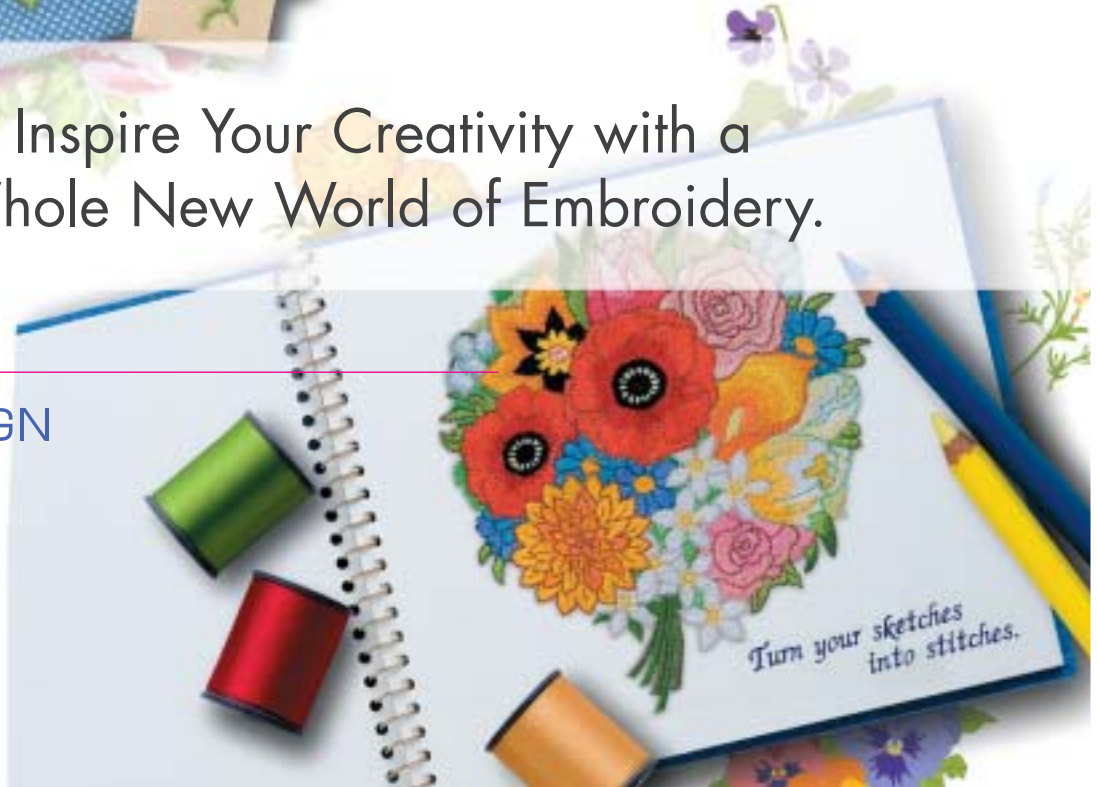


PE-DESIGN  
*Lite*

Inspire Your Creativity with a  
Whole New World of Embroidery.

PE-DESIGN

7

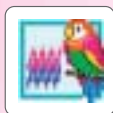


# Love simplicity? Go for PE

If you want to get into embroidery, PE-DESIGN Lite is the product for you. Great results

## This is what PE-DESIGN Lite can do!

**PE-DESIGN Lite** lets you make original embroidery quickly and easily with simple steps in one application.



You can finish all operation in one single application.

### Fonts

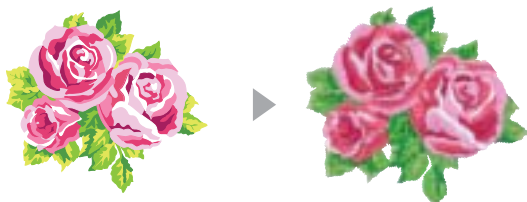
Comes with 35 built-in fonts. They can be curved and the kerning can be adjusted. Of course you can combine them with other ready-made images.



### Auto Digitizing

Images can be automatically turned into embroidery design with "Auto Punch" feature.

\* Photo Stitches and Cross Stitch are not available.



Lite

# -DESIGN Lite.

with easy operation in one single application.

## Sewing Order/Colour Changing

The sewing order and colour can be changed easily.



## Stitches

Region stitch can be selected from 2 types: Satin Stitch or Fill Stitch.

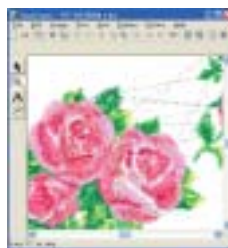
## Easy to Use

You can set simple sewing attribute such as sewing density and direction by simply pressing the buttons or sliding the sliders.



## Preview & Realistic Stitch Preview

You can preview the design's stitches while working on an image or when it is completed. You can also view a realistic preview of the design in order to see how it will appear once it is sewn.



Preview



Realistic preview

## Write the Data to Card

The created embroidery data can be written to a card to provide it to your embroidery machine.

## ● Trial of PE-DESIGN 7 is yours.

If you master PE-DESIGN Lite, it's time to try PE-DESIGN 7! You can experience the advanced embroidery world with the trial CD.



# Realize your embroi

Creating individual embroidery projects is now easier than ever!  
PE-DESIGN 7 enables you to start making your masterpiece right away,  
because it comes with 5 exclusive applications that satisfy all of your embroidery needs.

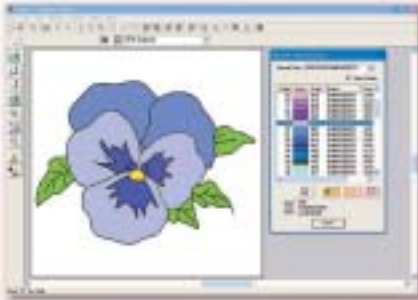
Find a whole new world of embroidery possibilities.

PE-DESIGN 7

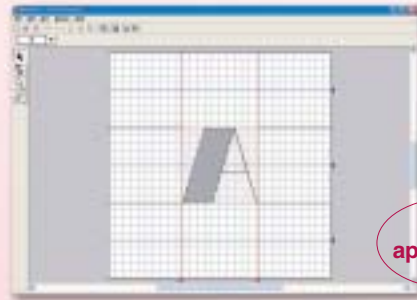


# dery dream!

**PE-DESIGN 7** enables you to start making your masterpiece right away, because it comes with 5 exclusive applications that satisfy all of your embroidery needs.



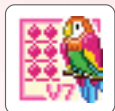
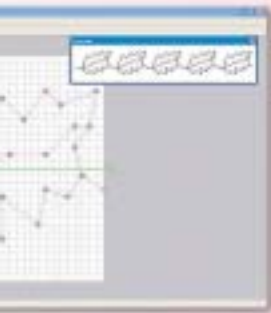
**Design Center**  
Create embroidery patterns manually with the supportive functions.



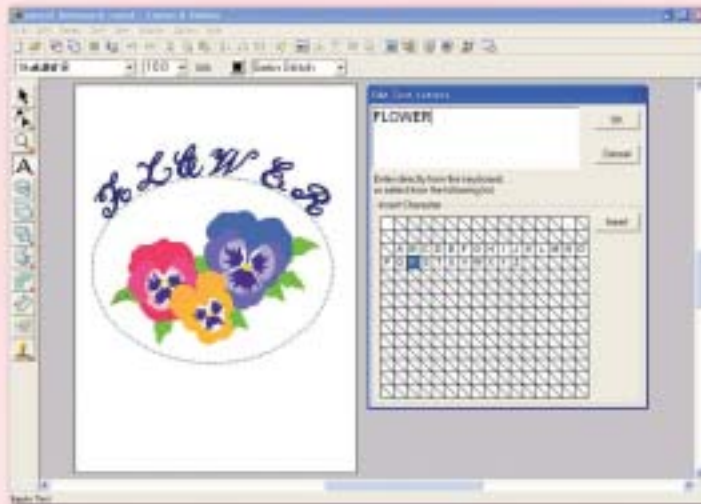
New application



**Font Creator**  
Create original font patterns to match your project.



**Programmable Stitch Creator**  
Create expressive stitch patterns.



**Layout & Editing**  
Create embroidery patterns automatically from a photo or an illustration, and edit the designs with the easy operation.



**Design Database**  
Organize and manage your embroidery design files easily and neatly.





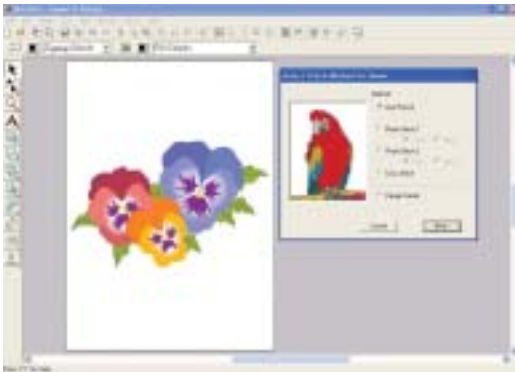
# Want professional results? C

Turn your favourite illustrations and photo's into embroidery.

## Quick & Easy. Automatic conversion

PE-DESIGN automatically turns images into embroidery designs with any stitch you desire to choose.

### Layout & Editing



PE-DESIGN supports all these image file formats:  
\*.bmp, \*.tif, \*.jpg, \*.pcx, \*.wmf, \*.png, \*.eps, \*.pcd, \*.fpx, \*.j2k



Auto Punch

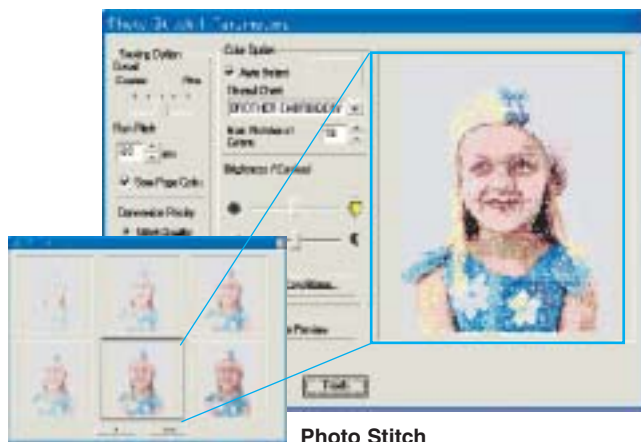
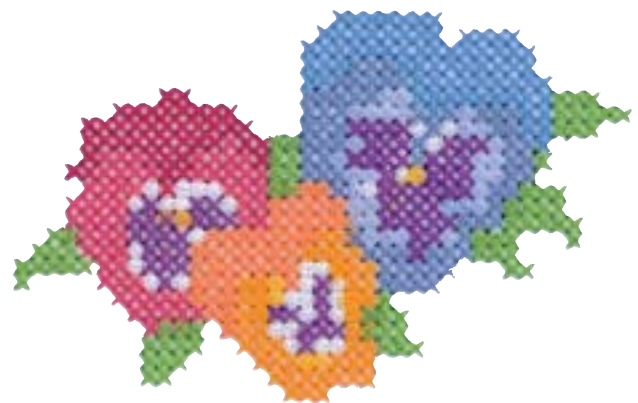


Photo Stitch

Processing speed and colour choosing are improved. PE-DESIGN automatically adjusts the brightness and contrast, and shows you several examples of the different brightness and contrast levels. All you have to do is select the best one!



Cross Stitch

## Manual conversion for avid creators

You can draw an image, and make alterations to lines of imported images, giving you more powerful editing possibilities.

### Design Center



STAGE 1

Opening an image file



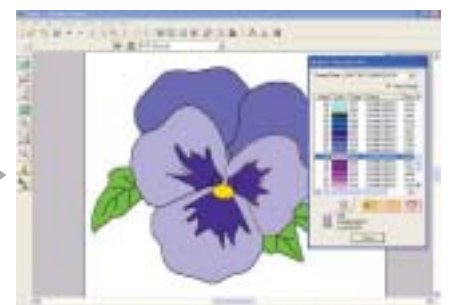
STAGE 2

Making an outline image



STAGE 3

Editing the outline



STAGE 4

Specifying sewing attributes

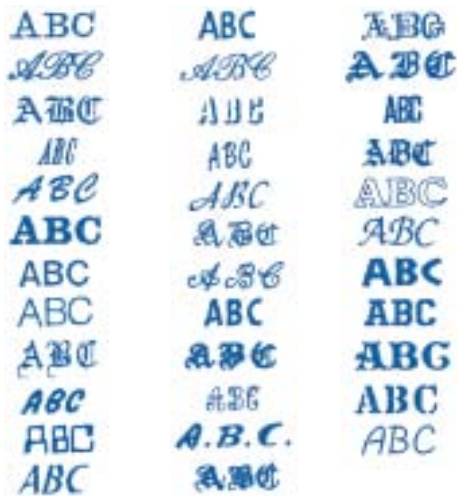
# Choose PE-DESIGN 7.

With enhanced font functions!  
Enjoy the great power of expression.

Use "Font creator" to create your original fonts: your creativity is boundless.

## 35 built-in font

Select fonts that meet your own taste.  
(You can also automatically convert true type fonts, giving you a virtually unlimited range of fonts.)



NEW

## Small fonts of 3 mm to 6 mm

Enjoy stitching small yet beautiful fonts that have never been possible before!



5 - 6mm

## Improved monogramming function

Just select a font, input characters, and select the decorative pattern.

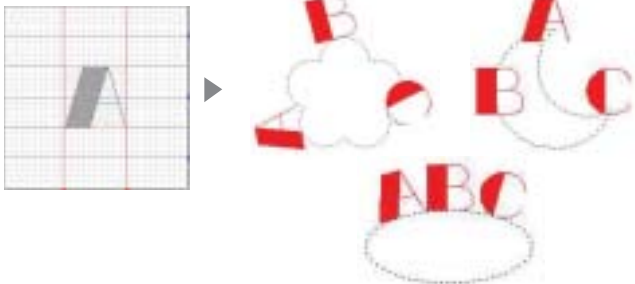
More decorative patterns are available.



NEW

## Font creator

Create fonts that meet your own taste.



The created fonts can be recalled to be used in Layout & Editing.

NEW

## Editing becomes easier

Simply drag the point to change the angle, size, kerning, etc.

- Transforming by dragging  
Text transform setting by dragging



- Editing by dragging  
Edit text layout by dragging (size, kerning, rotate angle, and vertical offset).



NEW

## Ethnic characters are available!

Now you can stitch Japanese, Chinese, and Korean characters using True Type Fonts. Useful for your exotic project.



# Expressive stitches create amazing embroidery.

## Gradation & Colour blending

PE-DESIGN automatically adjusts the stitch width to make the perfect gradation and colour blending.



Colour blending



Gradation



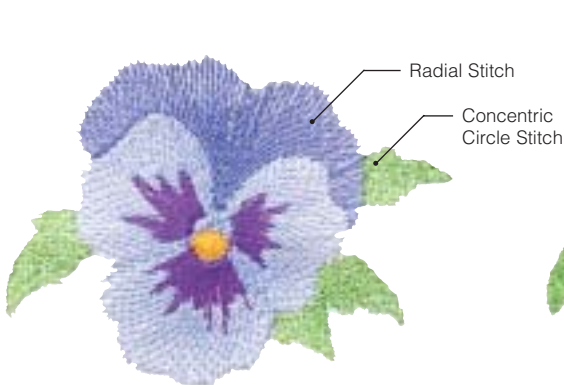
Gradation



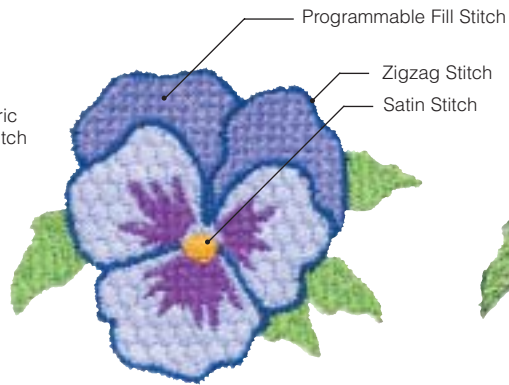
Colour blending

## Region & Line stitches

PE-DESIGN comes with 10 region and 5 line stitches to fulfill your creative needs.



Concentric Circle Stitch /  
Radial Stitch



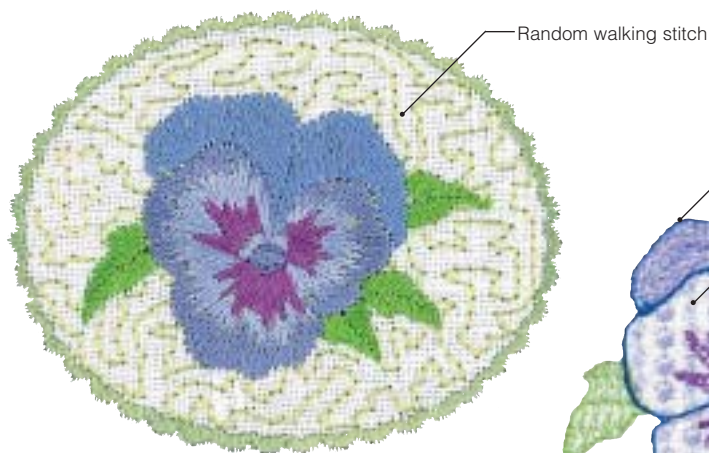
Programmable Fill Stitch



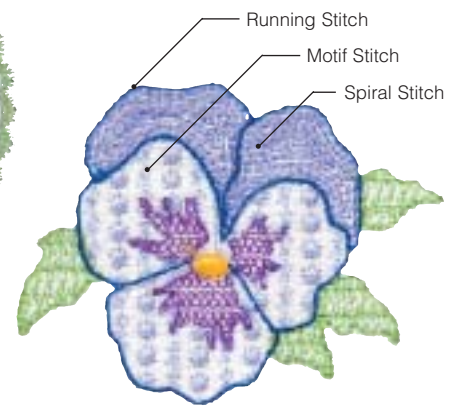
Photo Stitch



Fill Stitch



NEW  
Random Walking Stitch



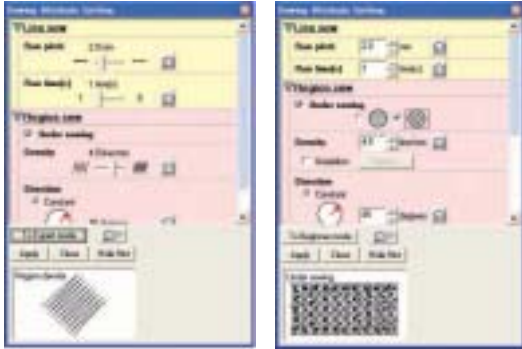
Spiral Stitch / Motif Stitch



# Sensational edit functions to satisfy your creativity.

## Easy operation for either beginners or experts

Quick & easy the "Beginner Mode", and for avid creators the "Expert Mode", and you can set "Personal Sewing Attribute" for your convenience.



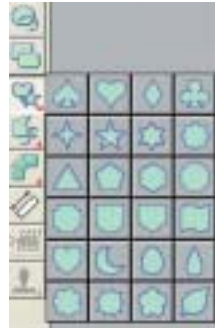
Beginner mode

Expert mode

NEW

## For the easy editing: 24 basic shapes

Add the shape to your drawing, or combine several shapes to make an design.



24 types (Heart, Star, etc.)



Sample (Combination of Flower, Leaf, Circle, and Rectangle)

NEW

## Improved corner stitching

Zigzag stitch of corners can be selected from 2 types.



NEW

## Supports 13 embroidery data formats

.pec, .pes, .dst, .exp, .pcs, .hus, .vip\*, .shv\*, .jef\*, .sew\*, .csd\*, .xxx\* and .phc files  
(\* Newly supported.)

NEW

## Expanded motif spacing

The motif can be spaced both vertically and horizontally.



# Key to your embroidery success

## Check and edit the sewing order/colour

The sewing order and colours can be checked and modified if necessary.



## See the finished image, before you actually sew!

You can preview the design's stitches while working on an image or when it is completed. You can also view a realistic preview of the design in order to see how it will appear once it is sewn.



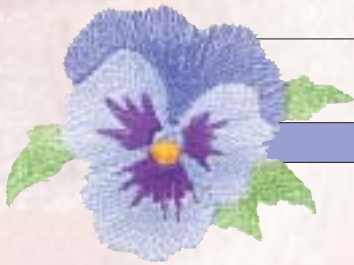
Realistic preview

## The "Stitch Simulator"

See the sewing simulation before you start stitching.

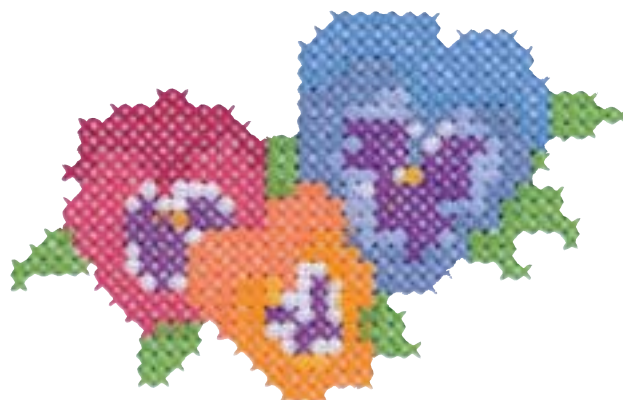


Preview



# PE-DESIGN *Lite*

General		
Hoop Size	2 Sizes [ 100 mm x 100 mm (4" x 4") 130 mm x 180 mm (5" x 7") ]	
File Import	Yes (.pec, .pes, .dst, .exp, .pcs, .hus, .vip, .shv, .jef, .sew, .csd, .xxx and .phc )	Yes
Export	n / a	
Number of Applications	1	
Font Functions		
Fonts	35 built-in fonts	
Text Arrangement	Follows the curve	
Text Kerning	Whole text	
Text Transform	n / a	
Monogram	n / a	
Small Font	n / a	
Custom Font Pattern Creation	n / a	
Image Conversion		
Auto Punch	Yes	
Photo Stitch	n / a	
Cross Stitch	n / a	
Sewing Attribute Setting		
Editing Sewing Attribute	Basic	
Region Sew Type	2 (Satin Stitch, Fill Stitch)	10 (Cross)
Line Sew Type	n / a	
Piping Stitch	n / a	
Gradation Colour Blending	n / a	
Stamp Pattern	n / a	
Drawing Shape		
Line, Rectangle, Circle, Heart, Star, etc.	n / a	
Manual Punch	n / a	
Editing		
Point Editing	n / a	
Stitch Pattern Editing	n / a	
Display		
Stitch Preview	Yes	
Realistic Preview	Yes	
Stitch Simulation	n / a	





# PE-DESIGN 7

5 Sizes

[ Up to 300 mm x 200 mm  
(11  $\frac{3}{4}$ " x 7  $\frac{3}{4}$ " )

(.pec, .pes, .dst, .exp, .pcs, .hus, .vip, .shv, .jef, .sew, .csd, .xxx and .phc )

Yes (.pes, .dst, .exp, .pcs, .hus, .vip, .shv, .jef, .sew, .csd and .xxx)

5 (Font Creator, Design Database, etc.)

35 built-in fonts and True Type Fonts

Follows shape of any line

Each letter

Yes

Yes

Yes

Yes (Font Creator)

Yes

Yes

Yes

Advanced

Stitch, Radial Stitch, Programmable Fill Stitch, Motif Stitch, Random Walking Stitch, etc.)

5 (Zigzag Stitch, Triple Stitch, Motif Stitch, etc.)

Yes

Yes

Yes

Yes

Yes

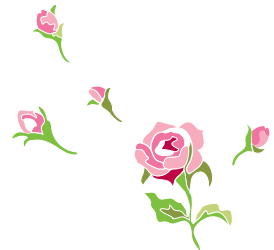
Yes

Yes

Yes

Yes

Yes



■ **MINIMUM PC Requirement** Before installing the software on your computer, make sure that the computer meets the following requirements.

Computer	IBM PC or compatible computer
Operation System	Windows® 2000 / XP / Vista
Processor	Pentium III 800 MHz or higher
Memory	128MB (512MB or more is recommended)

Hard disk free space	100MB (PE-DESIGN Lite), 200MB (PE-DESIGN 7)
Monitor	SVGA ( 800 x 600 ), 16-bit colour or higher
Port	USB ver.1.1 or higher
CD-ROM drive	Required for installation

■ **Package Contents**

**PE-DESIGN Lite**



**PE-DESIGN 7**



**Upgrade Kit for PE-DESIGN 5/6 Users**

**Upgrade Kit for PE-DESIGN Lite Users**



CD-ROM



Quick Reference Guide



CD-ROM



Quick Reference Guide

■ **Optional Accessories** (Separate purchase required.)

**Embroidery Card Library**



Choose from over 100 design embroidery cards

**Embroidery Threads**



Brother offers a variety of embroidery thread including metallics and flesh tones.

Find more information at  
[www.brother.com](http://www.brother.com)

Windows® is a registered trademark of Microsoft Corporation in the US and/or other countries. All other brand and product names are registered trademarks or trademarks of their respective companies.

**SPECIFICATIONS ARE SUBJECT TO CHANGE WITHOUT NOTICE.**

At your side.  
**brother**®

©2007 BROTHER INDUSTRIES, LTD. NAGOYA, JAPAN  
<http://www.brother.com>